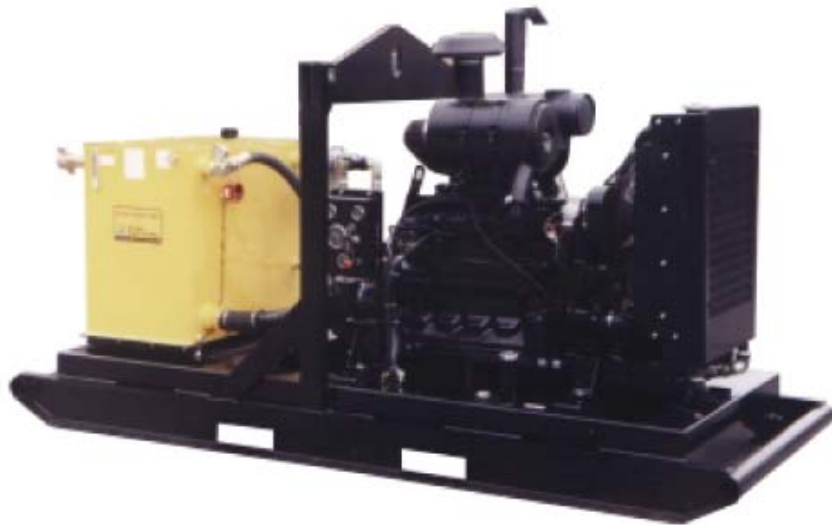




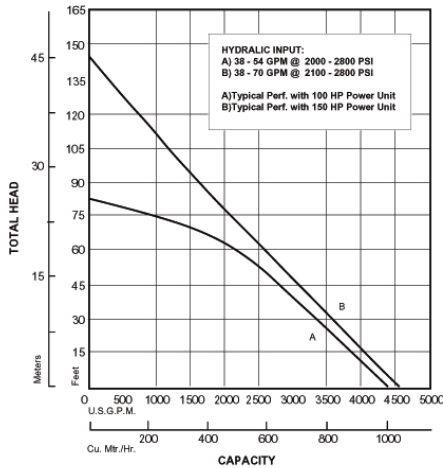
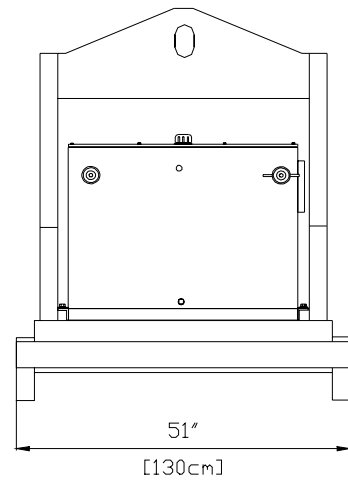
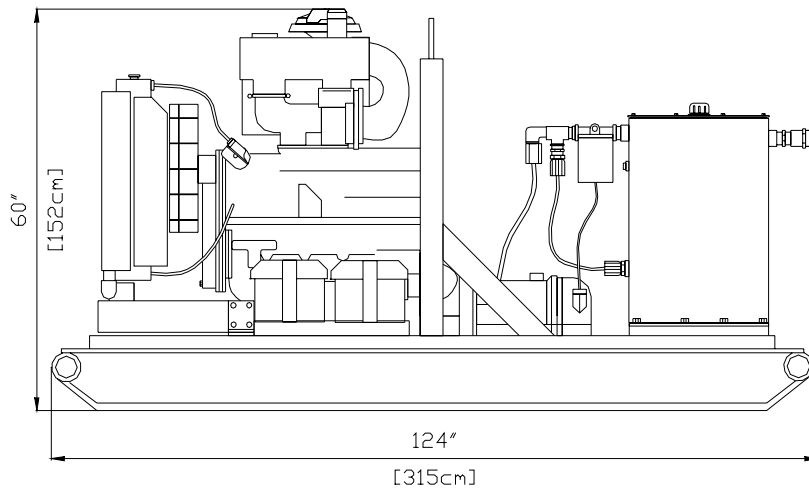
8" HYDRAULIC SUBMERSIBLE PUMP



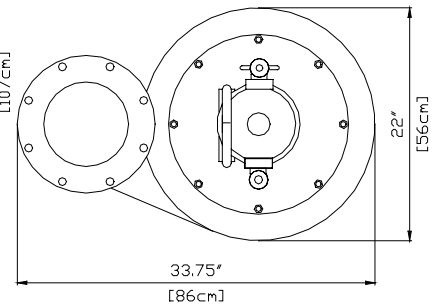
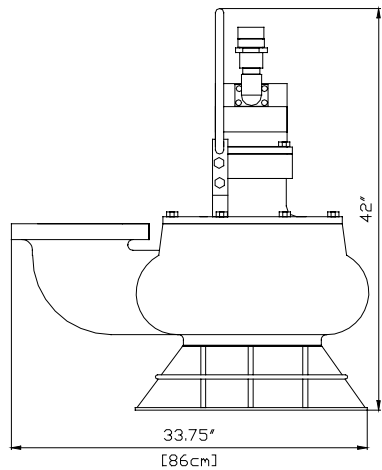
Designed to handle liquids such as sewage and sludge containing solids up to 4" (10 cm) in diameter, the Global Pump 8HYD provides reliable high volume pumping on jobs ranging from wastewater to sewage to sludge and debris laden applications. The 8HYD is capable of achieving maximum flows of 4575 US gallons per minute (1038.9 m³ per hour) and 144 feet (46.6m) total head. The standard 8HYD is offered with a skid mounted hydraulic power unit.

Features

- Compact (will fit through a 34in opening)
- Skid frame chassis with built in tank and fork lift slots
- The engine on the hydraulic power unit features an automatic safety shutdown package
- Variable speed hydraulic drive allows the pump to be operated anywhere within the range of maximum flow capacity and maximum head depending on the application
- High efficiency piston hydraulic pump
- Oil lubricated seals (can run dry)
- Compact design with an integral 89 US gallon (337 Liters) fuel tank and a 95 US gallon (385 Liters) hydraulic oil reservoir
- Safe hydraulic drive between the portable power unit and pump end means that it can be used where electric power is hazardous or impractical
- Submersible pump is not affected by suction lift limitations
- Engine mounted hydraulic oil cooler
- Pressure relief valve for safe operation
- Fluid level/ temperature gauge



Curves are based on pumping water at 60° F. For Performance Curves other than shown above, Consult Factory.



Specifications

- Maximum Operating Pressure:** 2500psi
- Pump End Weight:** 580lbs. (263kg)
- Solids Handling Capability:** 4" (10 cm) diameter using standard impeller
- Maximum Input Flow:** 70 gallons per minute (265 Liters per minute)
- Fuel Consumption:** Approx. 7 US gallons per hour (27 Liters per hour)
- Integral Fuel Tank Capacity:** 89 US gallons (337 liters), providing approx. 12.7 hours of running time
- Inlet Flange:** 8" 125# ASA
- Discharge Flange:** 8" 125# ASA

Materials

- Pump Body and Impeller:** Ductile Iron
- Wear Ring and Plate:** Steel
- Pump Drive Shaft:** 17-4PH Stainless Steel
- Shaft Seal:** Carbon/Ceramic (Std.)
Silicon Carbide (Opt.)
- Hydraulic Oil:** SAE 10W or 20W Type AW
- Pump End Elastomers:** Buna N (Std.)

Pumps: Sales, Parts & Service



Global Pump Company

10162 East Coldwater Road, Davison, MI 48423
 Tel: (810) 653-4828 Fax: (810) 653-7828

www.globalpump.com