



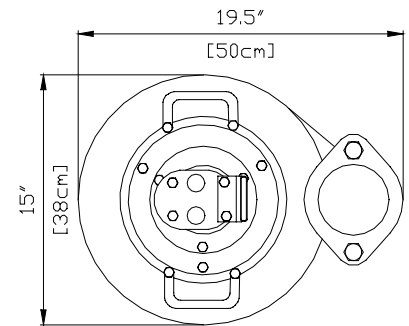
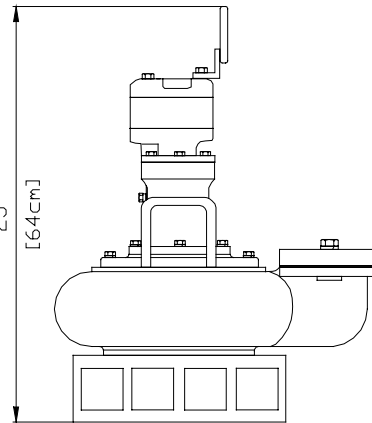
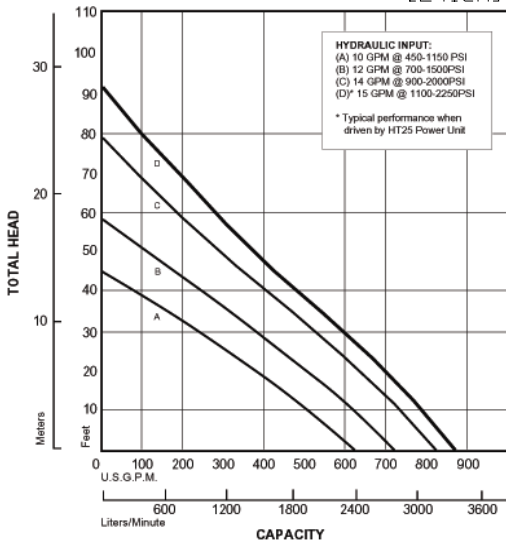
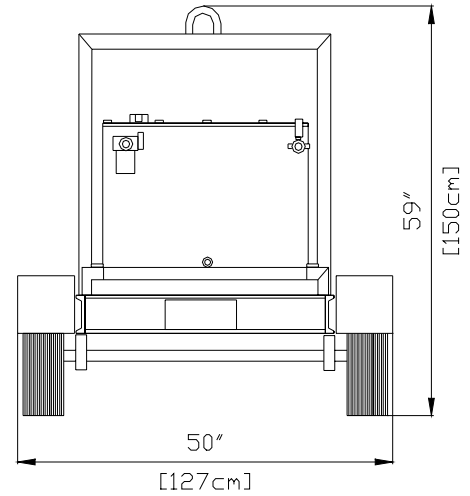
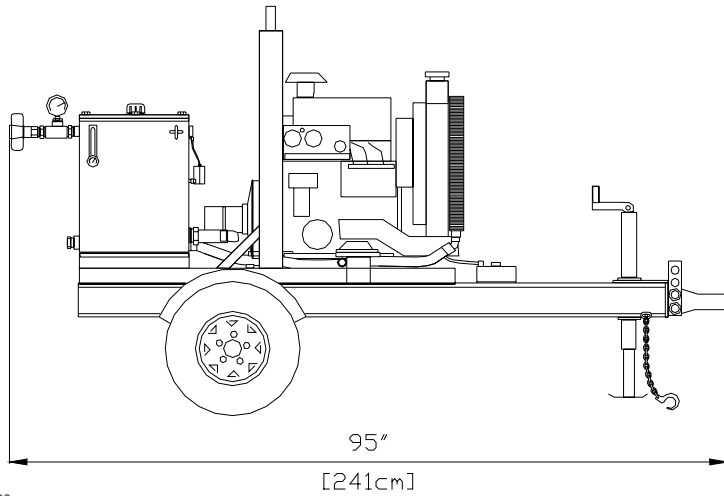
4" HYDRAULIC SUBMERSIBLE PUMP



Its rugged, compact design is able to handle liquids such as sewage and sludge containing solids up to 3" (75 mm) in diameter. The Global Pump 4HYD provides a dependable, high efficiency solution. This pump is designed to tackle many jobs ranging from general construction site dewatering to sewage and slurry pumping. The 4HYD is capable of achieving maximum flows of 870 US gallons per minute (3292.9 Liters per minute) and 91 feet (27.7 m) total head. The standard 4HYD is offered with a trailer mounted hydraulic power unit.

Features

- Light weight hydraulic pump end can be carried by two men
- Highway trailer chassis with built in fuel tank and independent suspension
- The engine on the hydraulic power unit features an automatic safety shutdown package
- Variable speed controller to allow the pump to be operated anywhere within the range of maximum flow capacity and maximum head depending on the application
- Dependable gear type hydraulic motor
- Oil lubricated seals (can run dry)
- Compact design with an integral 36 US gallon (136 Liters) fuel tank and a 25 US gallon (95 Liters) hydraulic oil reservoir
- Safe hydraulic drive between the portable power unit and pump end means that it can be used where electric power is hazardous or impractical
- Engine mounted hydraulic oil cooler
- System pressure relief valve for safe operation
- Submersible pump is not affected by suction lift limitations
- Other hydraulic tools and equipment may also operate from the power unit



Curves are based on pumping water at 60° F. For Performance Curves other than shown above, Consult Factory.

Specifications

- Maximum Operating Pressure:** 2250psi
- Pump End Weight:** 165lbs. (74kg)
- Solids Handling Capability:** 3" (75 mm) diameter using standard impeller
- Maximum Input Flow:** 15 gallons per minute (57 Liters per minute)
- Fuel Consumption:** Approx. 1.5 US gallons per hour (5.7 Liters per hour)
- Integral Fuel Tank Capacity:** 36 US gallons (136 liters), providing approx. 24 hours of running time
- Inlet Flange:** 4", 125# ASA
- Discharge:** 4" NPT(F)

Materials

- Pump Body and Impeller:** Ductile Iron
- Pump Drive Shaft:** Stainless Steel
- Shaft Seal:** Carbon/Ceramic (Std.)
Silicon Carbide (Opt.)
- Hydraulic Oil:** SAE 10W or 20W Type AW
- Pump End Elastomers:** Buna N (Std.)

Pumps: Sales, Parts & Service



Global Pump Company

10162 East Coldwater Road, Davison, MI 48423

Tel: (810) 653-4828 Fax: (810) 653-7828

www.globalpump.com