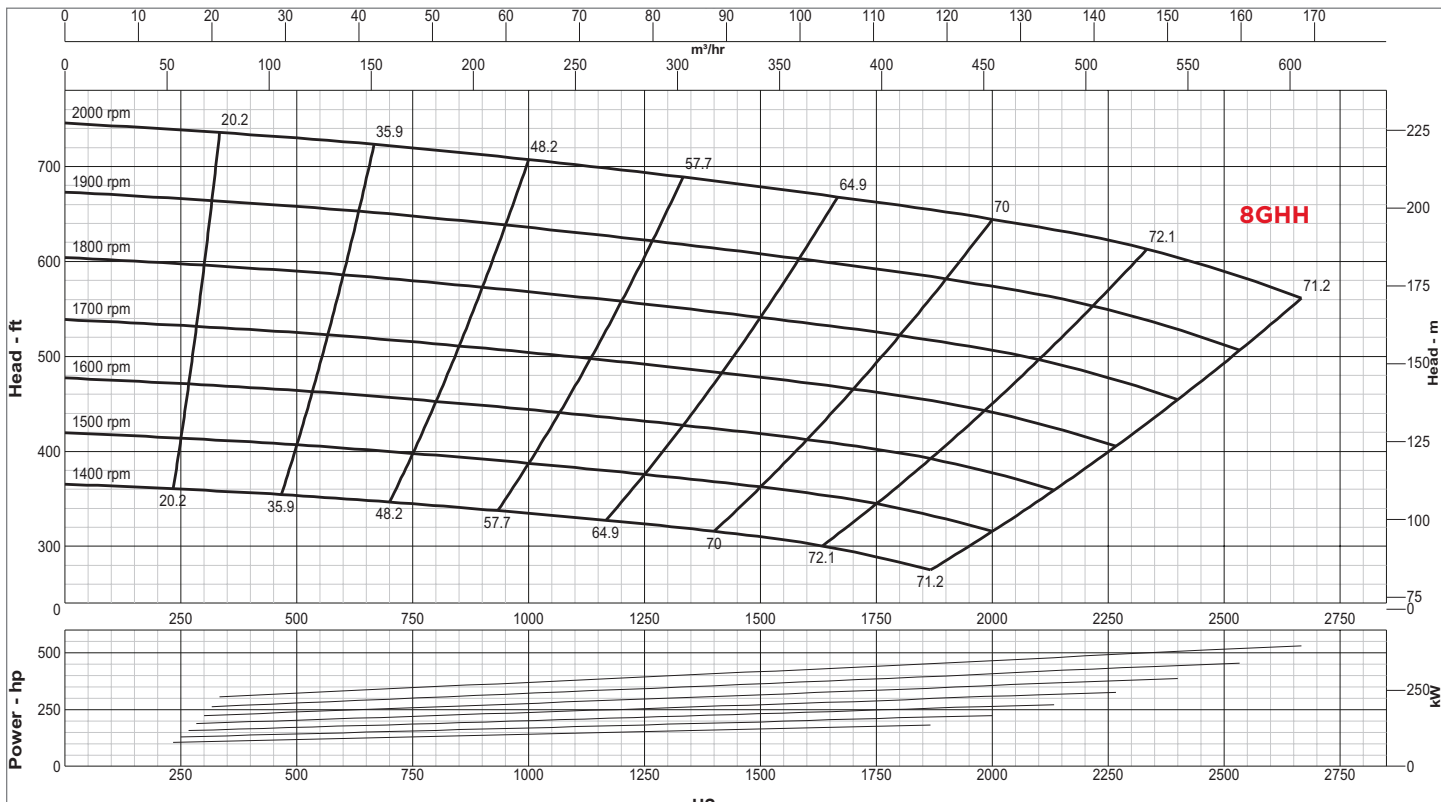


SPECIFICATIONS

Connections	8" x 6" (200 mm x 150 mm) ANSI Flanges
Max Pump Speed	2,000 rpm
Max Flow	2,665 gpm (605 m ³ /h)
Max Head	745' (227 m)
Max Static Priming Lift	28' (8.5 m)
Temperature Limit	160° F (70° C)
Solids Handling Capability	1.375" (34.9 mm)
Max Casing Pressure	300 psig (2,068 kPa)
Fuel Cell	253 gallons (958 liters)
Dry Weight	11,300 lbs

PUMP MATERIAL

Casing	Cast Steel (CD4MCu is an option)
Impeller	CD4MCu
Bearing Housing	Cast Iron
Bearing Lubrication	Grease
Shaft/Shaft Sleeves	Stainless Steel/ Stainless Steel
Seal	Silicon Carbide on Silicon Carbide
Chassis/Fuel Cell	Steel
Non-Return Valve	Steel



GLOBAL PUMP
 10162 East Coldwater Road, Davison, MI 48423
 Tel: 810.653.4828 Fax: 810.658.0632
1.866.360.PUMP www.globalpump.com